



**EXECUTIVE STYLE
PROPERTY**



11/41 William Street Double Bay NSW

1 1 1

LEASED FIRST INSPECTION BY SUZY GILMOUR 0412 559 651

Luxurious city pad in the heart of Double Bay!

Sunny north facing apartment set in a secure building with dual access to William Street and Transvaal Avenue.

Ticking all the boxes in a premier harbourside position, the apartment features a north aspect, wide sunny terrace and covered car space accessed from Transvaal Avenue at the rear of the building.

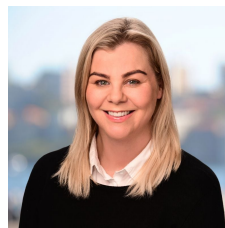
The easy flowing layout includes an entry hall, queen bedroom, bathroom, laundry, second toilet room, kitchen

[For full version visit the website](https://www.executivestyleproperty.com.au)

Type : Apartment

Price : \$1,100pw LEASED

View : <https://www.executivestyleproperty.com.au/lease/nsw/eastern-suburbs/double-bay/residential/apartment/8258770>



Suzy Gilmour
0419 201 311

<https://www.executivestyleproperty.com.au>