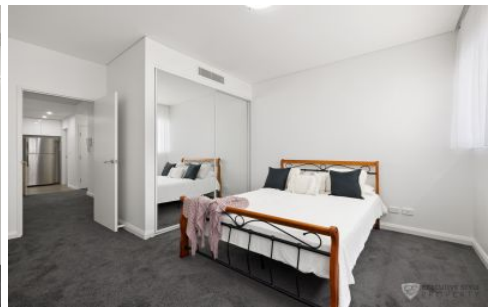




**EXECUTIVE STYLE  
PROPERTY**



**107/11D Mashman Avenue Kingsgrove NSW**

1 1 1

This modern residence with oversized entertainer's balcony occupies a prime private position in a desirable modern building.

All the local conveniences at your doorstep, Kingsgrove Train Station, Woolworths, local schools, cafés & eateries.

A great opportunity for the first home buyer or investor looking to get into the market.

Total size 95sqm  
81sqm apartment (Including balcony)  
15sqm allocated parking space.

+ Best layout in building

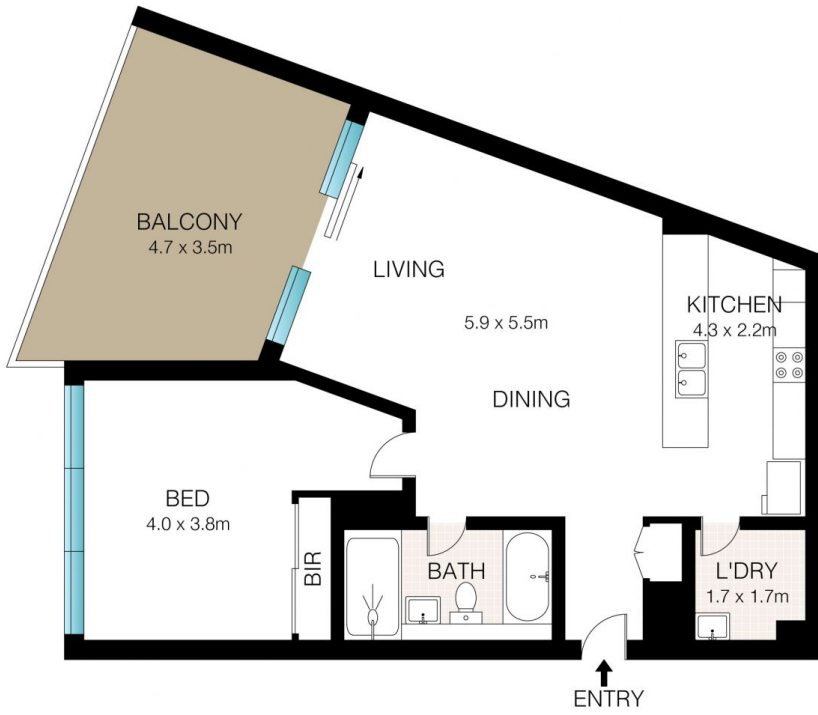
[For full version visit the website](https://www.executivestyleproperty.com.au/sale/nsw/st-george/kingsgrove/residential/apartment/7913505)

**Type** : Apartment  
**Price** : \$ 550,000  
**View** : <https://www.executivestyleproperty.com.au/sale/nsw/st-george/kingsgrove/residential/apartment/7913505>



**Dean Merrett**  
0419 201 311

<https://www.executivestyleproperty.com.au>



LEVEL 1



BASEMENT



INT+BAL: 81m<sup>2</sup>  
TOTAL: 95m<sup>2</sup>



This Floor Plan was prepared by WWW.CRYINGOUTLOUD.COM.AU for illustration purposes only. This document does not constitute any part of an offer or contract. Dimensions are approximate only. Copyright ©2024 Crying Out Loud. All Rights Reserved.

107/11D Mashman Avenue, Kingsgrove