



**EXECUTIVE STYLE
PROPERTY**



211/11D Mashman Avenue Kingsgrove NSW

1 1 1

This modern residence with oversized entertainer's balcony occupies a prime private position in a desirable modern building.

All the local conveniences at your doorstep including, Kingsgrove Train Station, Woolworths, local schools, cafés & eateries.

Large 92sqm apartment, plus 15sqm allocated parking space. TOTAL 107sqm

A great opportunity for the first home buyer or investor looking to get into the market.

+ Massive balcony

[For full version visit the website](https://www.executivestyleproperty.com.au/sale/nsw/st-george/kingsgrove/residential/apartment/7609710)

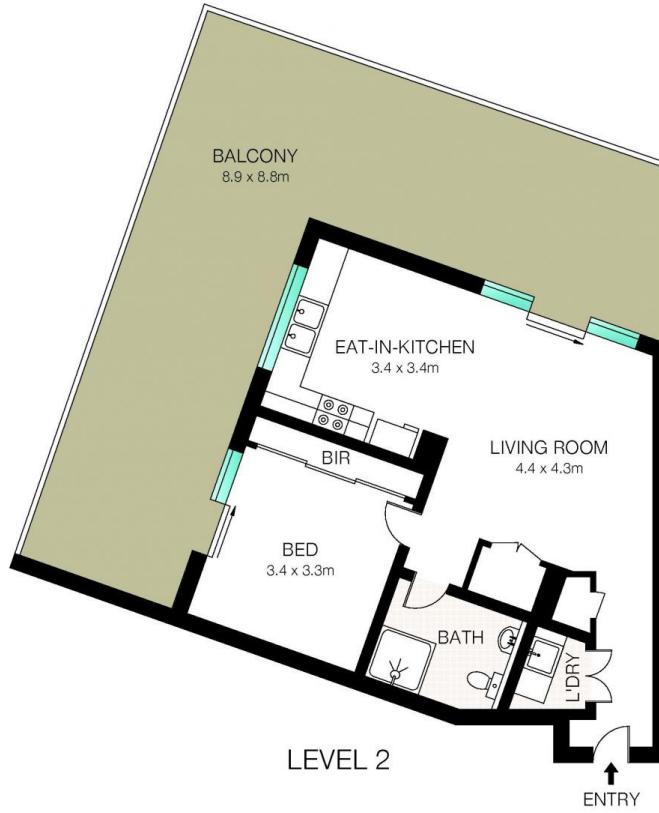
Type : Apartment
Price : \$ 566,000
Land Size : 92 sqm
View : <https://www.executivestyleproperty.com.au/sale/nsw/st-george/kingsgrove/residential/apartment/7609710>



Dean Merrett
0419 201 311



BASEMENT



LEVEL 2



TOTAL: 92m² 

This Floor Plan was prepared by WWW.CRYINGOUTLOUD.COM.AU for illustration purposes only. This document does not constitute any part of an offer or contract. Dimensions are approximate only. Copyright ©2023 Crying Out Loud. All Rights Reserved.

211/11D Mashman Avenue, Kingsgrove