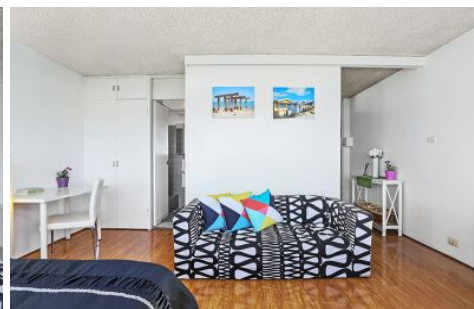




**EXECUTIVE STYLE
PROPERTY**



7d/51 Bayswater Road Potts Point NSW

1 🏠 1 🚗

Be impressed soaking up N-E sunlight and panoramic views to the heads of SYDNEY HARBOUR and boat filled RUSHCUTTERS BAY Marina !

Enjoying quiet privacy high up on lvl 7, airy cross flow sea breezes, timber floors, built ins, storage cupboard, new kitchen & security parking.

Desirably located to Potts Point shopping, bars, dining and the areas lifestyle attractions, plus bus and rail transport is only 1 min walk.

Happy chic city pad to enjoy with parking + or Investment opportunity, currently leased at \$530pw

Type : Studio
Price : \$ 569,000
View : <https://www.executivestyleproperty.com.au/sale/nsw/eastern-suburbs/potts-point/residential/studio/5665902>



Dean Merrett
0419 201 311

[For full version visit the website](https://www.executivestyleproperty.com.au)

<https://www.executivestyleproperty.com.au>

APARTMENT 7D/51 BAYSWATER ROAD
RUSHCUTTERS BAY



CAR SPACE
13 SQM

FLOOR PLAN

CAR SPACE

